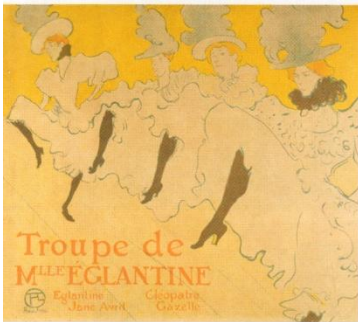
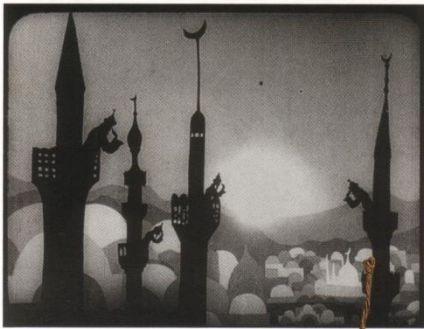


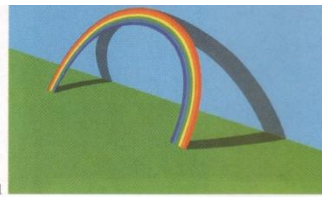
EXHIBITION diary



1 Triumphant arch – Patrick Hughes, *Leaning on a Landscape*, 1979, at Flowers. 2 King sized – Fabergé cigarette case given to Edward VII, 1903, at Buckingham Palace. 3 Shadow play – Lotte Reiniger, *The Adventures of Prince Achmed*, 1926, at the Barbican.



4 Yes, we cancan – Toulouse-Lautrec's *Miss Eglantine's Troupe*, 1896, at the Courtauld. 5 Basket case – vegetable-fibre carrier, at the British Museum. 6 Red queen – Gerrit van Honthorst, *Elizabeth of Bohemia*, c1631, at the Whitechapel. 7 On a roll – Hadieh Shafie, *Two Scroll Books*, 2011, at the V&A



BRITAIN LONDON

ARCH 402 CREMER ST, E2 8 July-5 Aug. *Wed-Fri 11-6, Sat, Sun 11-3*. JM Barrie's description of Mrs Darling – whose mouth has 'one kiss on it that Wendy could never get' – inspires a group show about enigmas and elusiveness.

BARBICAN ART GALLERY SILK ST, EC2 *Until 11 Sept. Mon, Tues, Fri-Sun 11-8, Wed 11-6, Thurs 11-10*. Clip art: 170 snippets of the greatest animated films. *Until 16 Oct. Mon-Wed, Fri-Sun 11-8, Thurs 11-10*. Architect Junya Ishigami installs a line of floating columns in the Curve gallery.

BRITISH MUSEUM GREAT RUSSELL ST, WC1 *Until 29 Aug. Mon-Thurs, Sat, Sun 10-5.30, Fri 10-8.30*. Tote couture: painted baskets made by indigenous Australians. The Tasmanian kelp water-carrier is the only known example of its kind. *Until 11 Sept*, a rich array of graphic art by Australian artists. *Until 9 Oct*, relics and reliquaries, including loans from the Pope's Sancta Sanctorum.

BRUNEI GALLERY AT SOAS THORNHAUGH ST, WC1 14 July-24 Sept. *Tues-Sun 10.30-5*. Ore inspiring: photographs, paintings, engravings and travellers' tales of the Golden Temple of Amritsar.

BUCKINGHAM PALACE BUCKINGHAM PALACE RD, SW1 23 July-3 Oct. *Mon-Sun 9.30-6.30*. A ruby-eyed figurine of Edward VII's Norfolk terrier, Queen Mary's mosaic Easter egg and a model of a vase of cornflowers bought to 'cheer up' the Palace air-raid shelter in a display of Fabergé creations owned by the royal family.

CALVERT 22 CALVERT AVE, E2 *Until 28 Aug. Wed-Sun 12-6*. The Moscow Conceptual School of the 1970s and 80s, a loose group of artists defined by a shared anti-authoritarian stance.

CHATEAU JOFFE UNIT 3, 7C PLOUGH YARD, EC2 31 July-28 Aug. *Sun 12-5*. Last Christmas, they opened their own Tate Modern in a Bankside dry cleaner's, showing brilliantly faux-naïf versions of the museum's paintings; now Jasper Joffe and Harry Pye mount a salon-style summer exhibition *chez Jasper*, 'inspired by French painters, friendship and family'.

CHRIS BEETLES FINE PHOTOGRAPHS SWALLOW ST, W1 20 July-27 Aug. *Mon-Sat 10-5.30*. Starry-eyed: iconic movie portraits shot by Cornel Lucas.

COURTAULD GALLERY SOMERSET HOUSE, STRAND, WC2 *Until 18 Sept. Mon-Sun 10-6*. Get your kicks: Toulouse-Lautrec's paintings and posters of Moulin Rouge cancan girl Jane Avril.

DANIEL BLAU HOXTON SQUARE, N1 8 July-10 Aug. *Tues-Sat 12-6*. Latter-day saints: Neal Fox's stained-glass windows of counterculture heroes – JG Ballard, Johnny Cash.

DESIGN MUSEUM SHAD THAMES, SE1 20 July-30 Oct. *Mon-Sun 10-5.45*. It's a Kodak moment: Instamatic cameras, plus Parker pens and London taxis, are among the numerous products designed by Kenneth Grange.

ESTORICK COLLECTION CANONBURY SQUARE, N1 *Until 4 Sept. Wed, Fri, Sat 11-6, Thurs 11-8, Sun 12-5*. National trust: Italian photographers' intimate portraits of artist compatriots. Look out for a Hitchcock-like De Chirico in a gondola.

FAGGIONATO FINE ART ALBEMARLE ST, W1 *Until 12 Aug. Mon-Fri 10-5.30*. Modern and contemporary Greek art, from Nelly's 1920s-1930s photographs of ancient temples to embroidered work by post-punk collective The Callas.

FLOWERS KINGSLAND RD, E2 14 July-3 Sept. *Tues-Sat 10-6*. Life in colour: Patrick Hughes celebrates 50 years as an artist with a retrospective that includes his bold paintings of rainbows and popular, eye-popping 'Reverspectives'.

THE GALLERY 99 MOUNT ST, W1 *Until 31 Aug. Mon-Fri 9-5.30*. Roar material: a life-size plaster lion by master carver and designer Paul Spencer stands guard over his blue alabaster cocktail cabinet, fireplaces and abstract sculptures.

HAUNCH OF VENISON BURLINGTON GARDENS, W1 *Until 20 Aug. Mon-Fri 10-6, Sat 10-5*. New work in stone and mud by perambulating land artist Richard Long. *Plus*, rich man's poor man: Arte Povera exponent Giuseppe Penone.

JAMES HYMAN FINE ART SAVILE ROW, W1 *Until 27 Aug. Mon-Fri 10-6, Sat 10-2*. Paper trail: etchings, aquatints and linocuts spanning Picasso's career. *Plus*, prints by Derrick Greaves.

JERWOOD SPACE UNION ST, SE1 13 July-28 Aug. *Mon-Fri 10-5, Sat, Sun 10-3*. A new applied-arts showcase features Emmanuel Boos's brightly coloured glazed ceramic cobblestones.

SADIE COLES SOUTH AUDLEY ST, W1 *Until 27 Aug. Tues-Sat 10-6*. William N. Copley's 'X-Rated' series of 1972-4: (extremely) graphic compositions of tangled bodies set against swathes of stripes, checks and spots.

TATE BRITAIN MILLBANK, SW1 *Until 21 Aug. Mon-Sun 10-6, first Fri of month 10-10*. Drip, drip: time's running out to catch British art's greatest watercolours. See March issue. *Until 4 Sept*, key works by the Vorticist group.

V&A CROMWELL RD, SW7 *Until 30 Oct. Mon-Thurs, Sat, Sun 10-5.45, Fri 10-10*. Incredible pictures of 19th-century industrialist palaces by architectural photography pioneers Bedford Lemere & Co. 21 July-25 Sept, this year's Jameel Prize, awarded to work that acknowledges Islamic traditions in art and design. Tehran-based Monir Shahroudy Farmanfarman's mirror-mosaic sculpture was inspired by the sparrows' feathers on her balcony.

WHITECHAPEL GALLERY WHITECHAPEL HIGH ST, E1 *Until 14 Aug. Tues, Wed, Fri-Sun 11-6, Thurs 11-9*. Fred Sandback's wool installation. *Until 4 Sept*, art from British embassies and government offices. *Until 18 Sept*, lost in space: vast colour photographs of ship-yards, oil rigs, cathedrals and museum interiors by the Bechers' pupil Thomas Struth.

